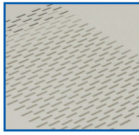


# COMPONENT SHELVES



Load Test



Ventilation



19" GERMANY Sliding Rail

## FEATURES

- ◆ **Designed and Manufactured** To comply Standards of ANSI/EIA-310D-1992 (Rev.EIA-310C), IEC60297-1, IEC60297-2, BS5954 Part:2, DIN 41494
- ◆ **19" Germany Export Rack Shelves** Designed with 19" Germany Export Rack trademark embossing and perforated surrounding for ventilation, suitable for all 19" Rack system.
- ◆ **Manufactured** Made from 1.5mm Electro-Galvanized Steel Sheet.
- ◆ **Maximum Load Capability**
  - 1U Front screw shelf for open rack and wall rack : 50kg (Picture A)
  - Fixed shelf : 100kg (Picture B)
  - Sliding shelf : 75kg (Picture C)
- ◆ **Color** New shine light gray painted by Electrostatic powder coating process.
- ◆ **Manufacturer and Distributor** Certified by ISO 9001:2015.

## Options

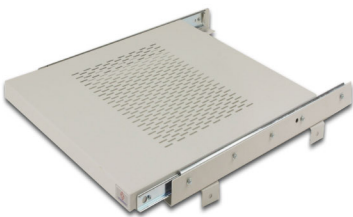
Color : \*Black color (as requested)



A



B



C

## ORDERING INFORMATION

Description	Deep					Figure
	250 mm.	480 mm.	650 mm.	750 mm.	950 mm.	
Front Panel Fix Shelf	G7-01025	-	-	-	-	A
Fix Component Shelf	-	G7-02045	G7-02065	G7-02075	G7-02095	B
Slide Component Shelf	-	G7-03045	G7-03065	G7-03075	G7-03095	C

\* Order No. for Black Color : G7-0XXXXB

Sample : G7-02065B Fix Component Shelf Deep 65 cm., Black Color